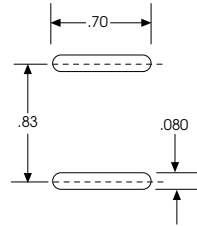
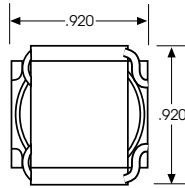
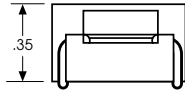
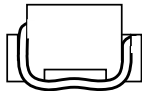


TL4 Series Surface Mount Toroids



GENERAL CHARACTERISTICS

- ◇ Suited for IR and vapor reflow solder process.
- ◇ Rated up to 130°C operating temperature (ambient plus temperature rise).
- ◇ Packaging in Bulk or Tape and Reel.
- ◇ Custom designs available upon request.

NOTES:

- (1) Maximum Operating Current based on a temperature rise of 40°C.
- (2) Inductance measured at 10Khz, .25 Vrms.
- (3) DC Resistance measured at +25°C.
- (4) Incremental Current based on 10% drop in inductance.

Part Number	Inductance (μH ± 15%) (2)	DCR (Ω) Max	Rated DC Current Max (1)	Incremental Current (4)	Inductance Min (μH)
TL4-1R2	1.2	0.006	10.70	8.75	0.83
TL4-1R5	1.5	0.006	10.20	7.29	1.20
TL4-2R2	2.2	0.007	9.70	6.25	1.60
TL4-2R7	2.7	0.008	9.50	5.47	2.10
TL4-3R3	3.3	0.009	8.80	4.86	2.70
TL4-3R9	3.9	0.009	8.60	4.51	3.00
TL4-4R7	4.7	0.010	8.50	4.38	3.30
TL4-5R6	5.6	0.010	8.30	3.98	4.00
TL4-6R8	6.8	0.011	8.10	3.65	4.75
TL4-8R2	8.2	0.013	7.80	3.13	6.50
TL4-100	10	0.013	7.40	2.92	7.40
TL4-120	12	0.015	7.10	2.57	9.60
TL4-150	15	0.017	6.80	2.30	12.00
TL4-180	18	0.017	6.70	2.19	13.00
TL4-220	22	0.019	6.50	1.99	16.00
TL4-270	27	0.021	6.10	1.75	20.00
TL4-330	33	0.024	5.80	1.56	26.00
TL4-390	39	0.025	5.70	1.46	29.00
TL4-470	47	0.028	5.50	1.33	36.00
TL4-560	56	0.031	5.20	1.22	43.00
TL4-680	68	0.040	4.60	1.12	50.00
TL4-820	82	0.045	4.40	1.02	61.00
TL4-101	100	0.062	3.70	0.91	76.00
TL4-121	120	0.070	3.50	0.83	93.00
TL4-151	150	0.079	3.30	0.74	115.00
TL4-181	180	0.105	2.90	0.68	136.00
TL4-221	220	0.118	2.70	0.62	167.00
TL4-271	270	0.162	2.30	0.55	207.00
TL4-331	330	0.181	2.20	0.50	251.00
TL4-391	390	0.243	1.90	0.46	300.00
TL4-471	470	0.269	1.80	0.42	359.00
TL4-561	560	0.297	1.70	0.39	424.00
TL4-661	681	0.406	1.40	0.35	519.00
TL4-821	820	0.452	1.30	0.32	624.00
TL4-102	1000	0.617	1.10	0.29	768.00