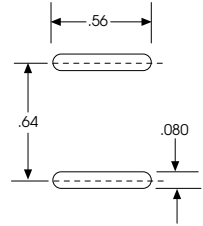
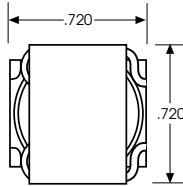
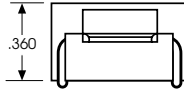
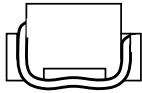


TL3 Series Surface Mount Toroids



GENERAL CHARACTERISTICS

- ◇ Suited for IR and vapor reflow solder process.
- ◇ Rated up to 130°C operating temperature (ambient plus temperature rise).
- ◇ Packaging in Bulk or Tape and Reel.
- ◇ Custom designs available upon request.

NOTES:

- (1) Maximum Operating Current based on a temperature rise of 40°C.
- (2) Inductance measured at 10Khz, .25 Vrms.
- (3) DC Resistance measured at +25°C.
- (4) Incremental Current based on 10% drop in inductance.

Part Number	Inductance ($\mu\text{H} \pm 15\%$) (2)	DCR (Ω) Max	Rated DC Current Max (1)	Incremental Current (4)	Inductance Min (μH)
TL3-1R2	1.2	0.006	10.00	8.90	0.81
TL3-1R5	1.5	0.006	9.50	7.60	1.10
TL3-2R2	2.2	0.007	9.00	6.60	1.44
TL3-2R7	2.7	0.008	8.40	5.90	1.82
TL3-3R3	3.3	0.008	8.20	5.30	2.24
TL3-3R9	3.9	0.009	7.90	4.80	2.72
TL3-4R7	4.7	0.010	7.50	4.40	3.23
TL3-5R6	5.6	0.011	7.30	4.10	3.79
TL3-6R8	6.8	0.011	7.10	3.80	4.40
TL3-8R2	8.2	0.013	6.60	3.30	5.74
TL3-100	10	0.013	6.50	3.10	6.49
TL3-120	12	0.015	6.10	2.80	8.10
TL3-150	15	0.016	5.90	2.50	9.90
TL3-180	18	0.017	5.00	2.30	11.07
TL3-220	22	0.024	4.60	2.00	15.17
TL3-270	27	0.026	4.40	1.80	18.87
TL3-330	33	0.029	4.30	1.60	22.98
TL3-390	39	0.038	3.70	1.50	25.94
TL3-470	47	0.043	3.50	1.40	32.40
TL3-560	56	0.057	3.10	1.30	37.72
TL3-680	68	0.063	3.00	1.10	45.44
TL3-820	82	0.087	2.60	1.00	56.10
TL3-101	100	0.097	2.40	0.97	67.88
TL3-121	120	0.107	2.30	0.89	80.78
TL3-151	150	0.146	1.90	0.80	100.73
TL3-181	180	0.164	1.80	0.70	122.88
TL3-221	220	0.225	1.50	0.65	150.89
TL3-271	270	0.250	1.40	0.59	181.76
TL3-331	330	0.342	1.20	0.50	224.40
TL3-391	390	0.378	1.10	0.49	266.61
TL3-471	470	0.510	1.00	0.45	317.77
TL3-561	560	0.565	0.90	0.40	379.24
TL3-681	680	0.637	0.80	0.37	465.32
TL3-821	820	0.849	0.70	0.34	560.19
TL3-102	1000	0.951	0.70	0.30	679.39