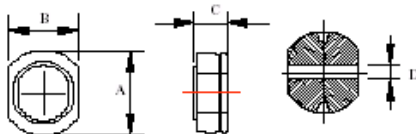


LC105S Series Shielded Inductors



TYPE	A	B	C	D
LC105S	10.0±0.4	9.0±0.4	5.0±0.5	2.5

LCS Series Shielded Inductors

Part Number	Inductance (uhy)	Test Freq.	SRF Mhz min.	DCR Ohms max.	Rated Currer DC amps ma.
LC105S-100M	10	2.50Mhz	31	0.060	2.53
LC105S-120M	12	2.50Mhz	27	0.060	2.31
LC105S-150M	15	2.50Mhz	27	0.070	2.06
LC105S-180M	18	2.50Mhz	26	0.080	1.89
LC105S-220M	22	2.50Mhz	21	0.090	1.71
LC105S-270M	27	2.50Mhz	18	0.110	1.54
LC105S-330M	33	2.50Mhz	16	0.120	1.39
LC105S-390M	29	2.50Mhz	15	0.160	1.28
LC105S-470M	47	2.50Mhz	14	0.180	1.17
LC105S-560M	56	2.50Mhz	12	0.190	1.07
LC105S-680M	68	2.50Mhz	11	0.220	0.97
LC105S-820M	82	2.50Mhz	10	0.280	0.88
LC105S-101M	100	1.0Khz	7	0.350	0.80
LC105S-121M	120	1.0Khz	6.5	0.380	0.73
LC105S-151M	150	1.0Khz	5.8	0.450	0.65
LC105S-181M	180	1.0Khz	5.3	0.620	0.60
LC105S-221M	220	1.0Khz	5.2	0.690	0.54
LC105S-271M	270	1.0Khz	4.6	0.780	0.49
LC105S-331M	330	1.0Khz	4.2	1.030	0.44
LC105S-391M	390	1.0Khz	3.6	1.180	0.41
LC105S-471M	470	1.0Khz	3.6	1.600	0.37

Notes.

1. Current rating based on 25% decrease from initial inductance at 0ADC.
2. Operating temp range: -20 Deg. C to + 80 Deg. C.
3. Temp rise to be 40 Deg C max. at rated current.